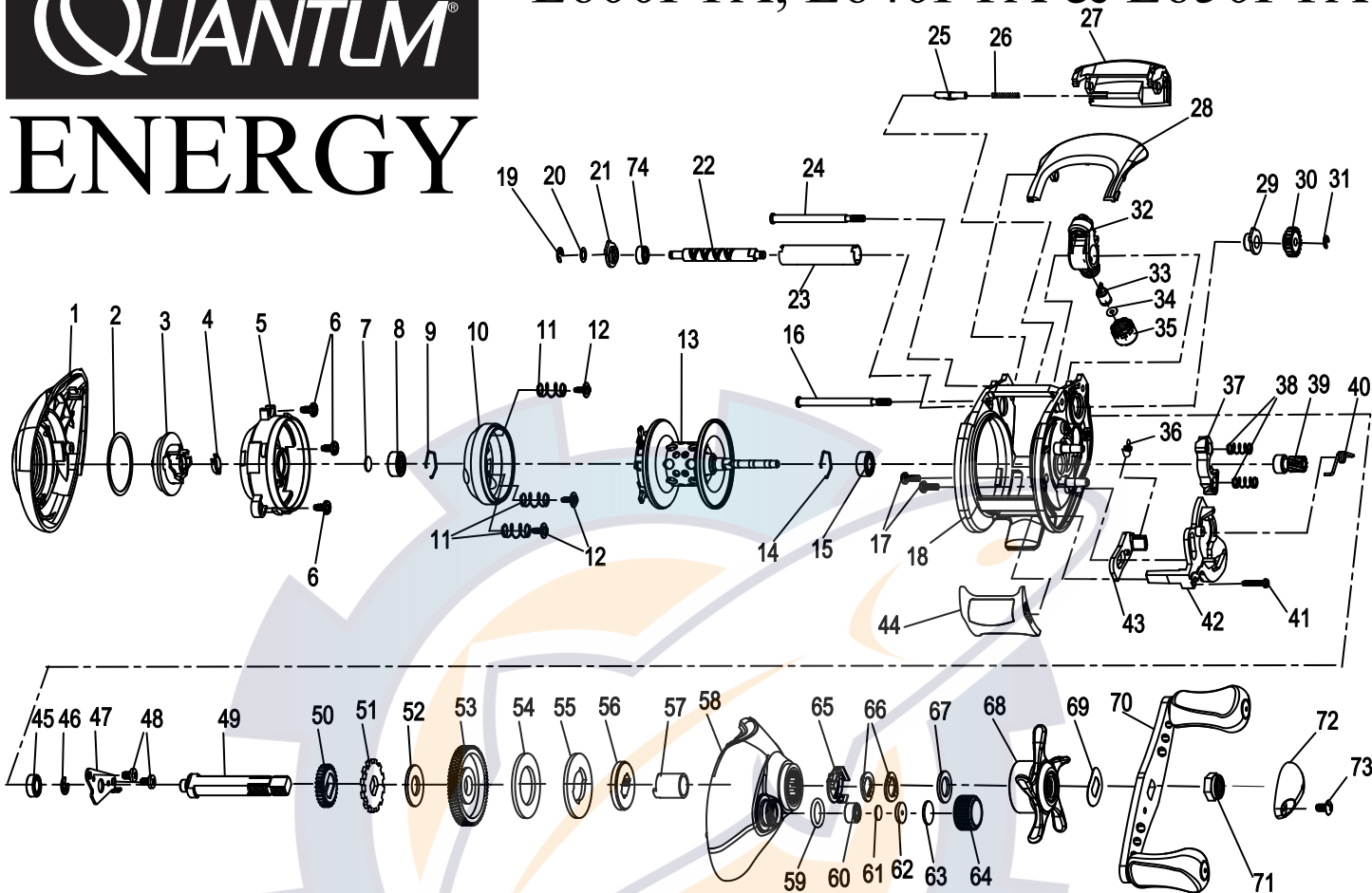




E600PTA, E640PTA & E650PTA



Quantum Energy E600PTA / E650PTA / E640PTA Part List

Key #	Description	Part No.		
		E600PTA	E650PTA	E640PTA
1	Palm Side Cover Assembly	CX323-03	CX323-04	CX323-05
2	Centrifugal Dial Washer	QV111-01	↔	↔
3	Centrifugal Dial Assembly	CX326-01	↔	↔
4	Centrifugal Dial Spring	CX108-01	↔	↔
5	Spool Cover	CX051-01	↔	↔
6	Spool Cover Screw	QV125-01	↔	↔
7	Spool Tension Shim	QW032-04	↔	↔
8	Spool Shaft Ball Bearing - Palm	QV017-01	↔	↔
9	Clip Ring	HV080-01	↔	↔
10	Brake Ring Assembly	HV342-02	↔	↔
11	Brake Ring Retainer Spring	QV070-01	↔	↔
12	Brake Ring Retainer Screw	CX076-01	↔	↔
13	Spool Assembly	AX321-01	↔	↔
14	Clip Ring	HV080-01	↔	↔
15	Spool Shaft Ball Bearing - Gear	JX106-01	↔	↔
16	Stabilizer Bar	CX061-01	↔	↔
17	Gear Side Cover Screw	BV123-01	↔	↔
18	Frame	CX001-02	CX001-03	CX001-04
19	E-Clip	NX090-01	↔	↔
20	Worm Shaft Washer	QW035-03	↔	↔
21	Worm Shaft Bearing Retainer	CX067-01	↔	↔
22	Worm Shaft	HV072-02	↔	↔
23	Worm Shaft Guide	HV016-01	↔	↔
24	Stabilizer Bar	CX061-01	↔	↔
25	Side Cover Locking Lever	CX119-01	↔	↔
26	Side Cover Locking Lever Spring	ZW096-01	↔	↔
27	Front Support	CX099-03	CX099-04	CX099-05
28	Hood	CX027-02	CX027-03	CX027-04
29	Worm Shaft Bushing - Gear	HV068-01	↔	↔
30	O/S Pinion Gear	HV085-01	↔	↔
31	E-Clip	NX090-01	↔	↔
32	Line Guide Carrier	CX047-01	↔	↔
33	Line Guide Pawl	CX006-01	↔	↔
34	Line Guide Carrier Washer	BV035-01	↔	↔
35	Line Guide Carrier Screw	ZW007-02	↔	↔
36	Kick Lever Spring	QV097-01	↔	↔
37	Pinion Yoke	CX025-01	↔	↔

Key #	Description	Part No.		
		E600PTA	E650PTA	E640PTA
38	Pinion Yoke Spring	CX040-01	↔	↔
39	Pinion Gear Assembly	VW311-01	ZW311-01	CX311-01
40	Release Slider Spring	CX104-01	↔	↔
41	Thumb Bar Screw	ZW053-01	↔	↔
42	Release Slider	CX039-01	↔	↔
43	Kick Lever	CX077-01	↔	↔
44	Thumb Bar	CX009-01	↔	↔
45	Crank Shaft Ball Bearing -L	SW017-01	↔	↔
46	E-Clip	QW120-01	↔	↔
47	Crank Shaft Retainer	CX002-01	↔	↔
48	Crank Shaft Retainer Screw	JX107-01	↔	↔
49	Crank Shaft	CX008-01	↔	↔
50	O/S Drive Gear	ZW112-01	↔	↔
51	Trip Ratchet	QW083-01	↔	↔
52	Trip Ratchet Washer	QW111-01	↔	↔
53	Drive Gear	HV012-01	XV012-01	CX012-01
54	Drag Disc	HV059-01	↔	↔
55	Drag Key Washer	HV045-01	↔	↔
56	Link	HV036-01	↔	↔
57	One Way Clutch Sleeve	HV052-01	↔	↔
58	Gear Side Cover Assembly	SX324-01	SX324-02	SX324-03
59	Spool Tension Knob O-Ring	QW101-01	↔	↔
60	Spool Tension Knob Ball Bearing	SW117-01	↔	↔
61	Spool Tension Washer	QW032-04	↔	↔
62	Spool Tension Collar	QW081-01	↔	↔
63	Spool Cushion Washer	QW082-01	↔	↔
64	Spool Tension Knob Assembly	CX333-01	↔	↔
65	Drag Click Spring Assembly	ZW4114	↔	↔
66	Spring "D" Washer	QW046-02	↔	↔
67	Star Drag Washer	ZW032-02	↔	↔
68	Star Drag Assembly	CX355-03	CX355-02	CX355-04
69	Handle Washer	QW054-01	↔	↔
70	Handle Assembly	CX318-02	↔	↔
71	Handle Nut	QW003-01	↔	↔
72	Handle Nut Cap	JX034-04	↔	↔
73	Handle Nut Cap Screw	QW123-01	↔	↔
74	Worm Shaft Ball Bearing	XX117-01	↔	↔